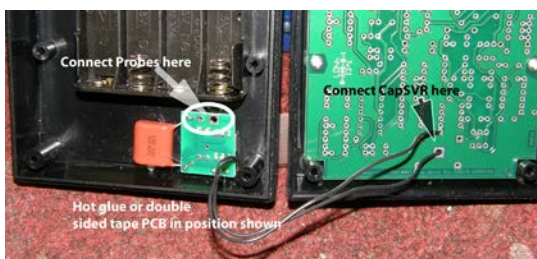
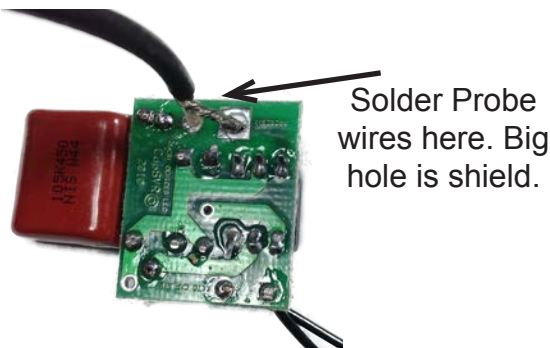
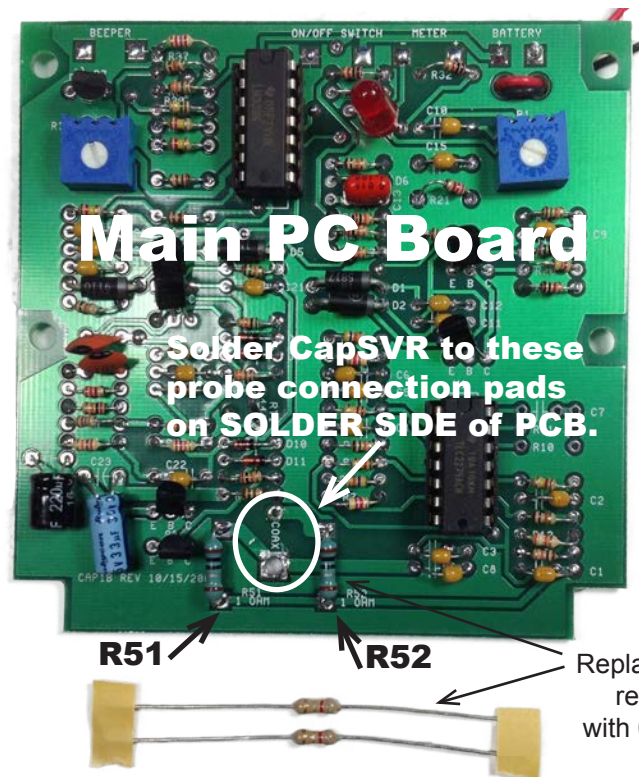
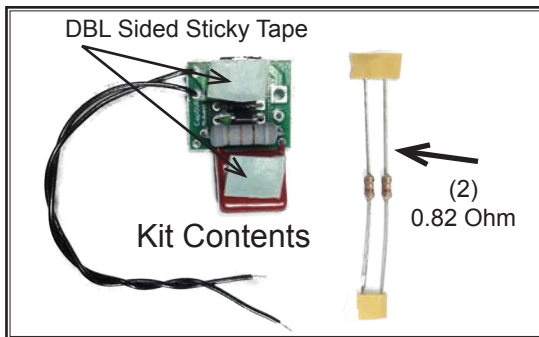


# How to Install CapSVR

By Doug Jones 04/03/2013

- 1) Disconnect battery clip. Remove 4 screws securing the Main PC Board. Carefully lay the board over so that the component side is exposed. Take care not to break any wires from the board.
- 2) Locate R51 and R52 (1 ohm resistors on either side of probe wire) Remove R51 and R52. Replace with 0.82 ohm resistors provided in kit.
- 3) Un-solder and remove probe wires from Main PC Board.
- 4) Reinstall Main PC Board (4 screws).
- 5) Twist the 2 wires attached to the CapSVR. Does not need to be tight, just a loose twist. Solder these wires to Main PC Board probe pads on SOLDER SIDE (Polarity doesn't matter.)
- 6) Solder probe wires to CapSVR. Large hole is for shield.
- 7) Re-connect battery clip. Test Capacitor Wizard by measuring one of the 1 ohm resistors you previously removed.
- 8) Remove paper from double sided sticky tape.
- 9) Attach CapSVR below battery box on right side. Reassemble the case - You're done!



CapSVR location in case.

